

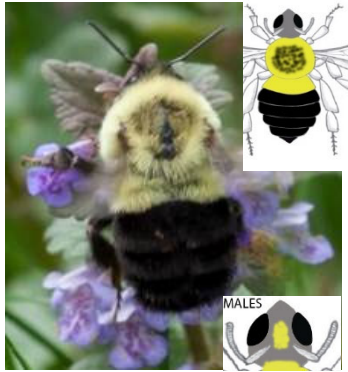
SP=species at risk
A=abundant

BUMBLEBEE SPECIES ID GUIDE (MA to NC)

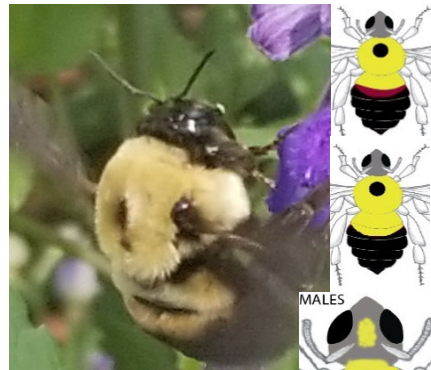
RJ Gegear (rgegear@umassd.edu)

LE=low elevation
HE=high elevation
LH=low/high elevation

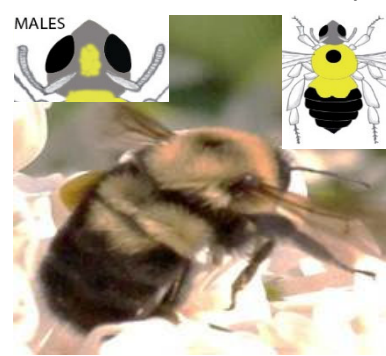
Bombus impatiens A, LH



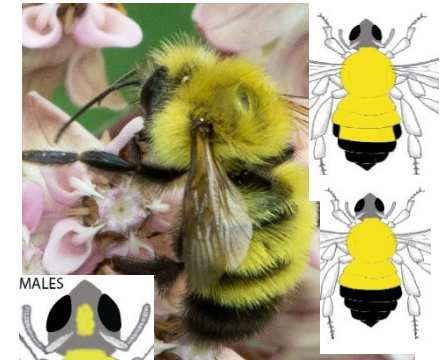
Bombus griseocollis A, LH



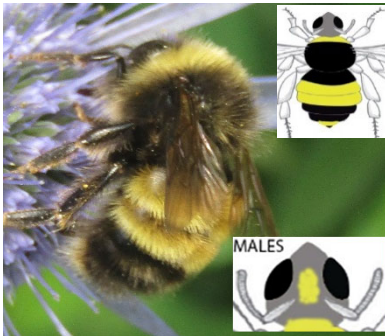
Bombus bimaculatus A, LH



Bombus perplexus A, LH



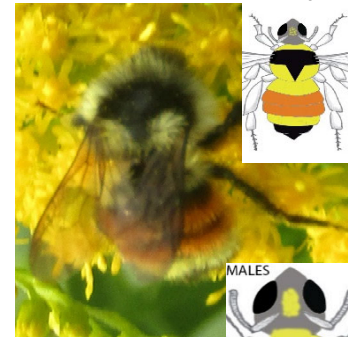
Bombus terricola SP, HE



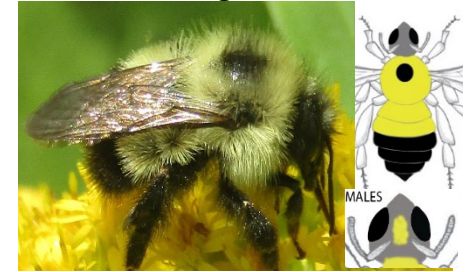
Bombus affinis SP, LH



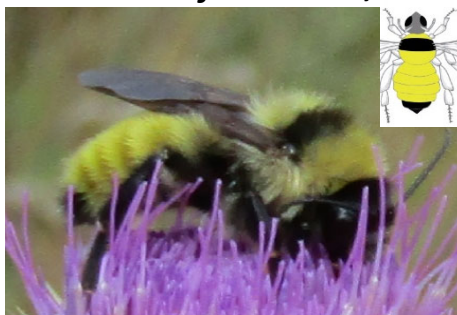
Bombus ternarius A, HE



Bombus vagans SP, LH



Bombus fervidus SP, LH



Bombus borealis A, HE



Bombus pensylvanicus SP, LE

